



[njbayislands.org](http://njbayislands.org)

## Long Beach Township

After understanding the impacts of hurricane Sandy, many New Jersey coastal communities turned their attention to the back bay system and its natural functions. The New Jersey Bay Islands Initiative (NJBII) was formed by a variety of partners to address, manage, and pursue restoration of the bay islands as a whole system. Bay islands are important natural habitats for wildlife and serve as protection for our neighborhoods and communities from the increasing intensity of climate change impacts.

## Bay Islands Need Our Help

Since the late 1970's, thirteen NJ Bay Islands succumbed to sea level rise and are now submerged. The remaining islands have lost 7% of island acreage due to erosion from wave action produced by wind, storms, and boat wakes. These islands are a functional part of our bay ecosystem, and we have a responsibility to protect and restore them now!

## What You Can Do



- Increase your knowledge of the importance of bay islands
- Reduce boat speed around bay islands and shorelines
- Observe wildlife using bay islands
- Volunteer for community science projects
- Attend municipal land use [meetings](#)

## How Bay Islands Work For Us

1 acre of wetlands  
stores 1.5 million  
gallons of floodwater



Provide habitat for  
wildlife

Stores excess carbon  
from greenhouse gases



Act like speed bumps  
by absorbing wave  
energy

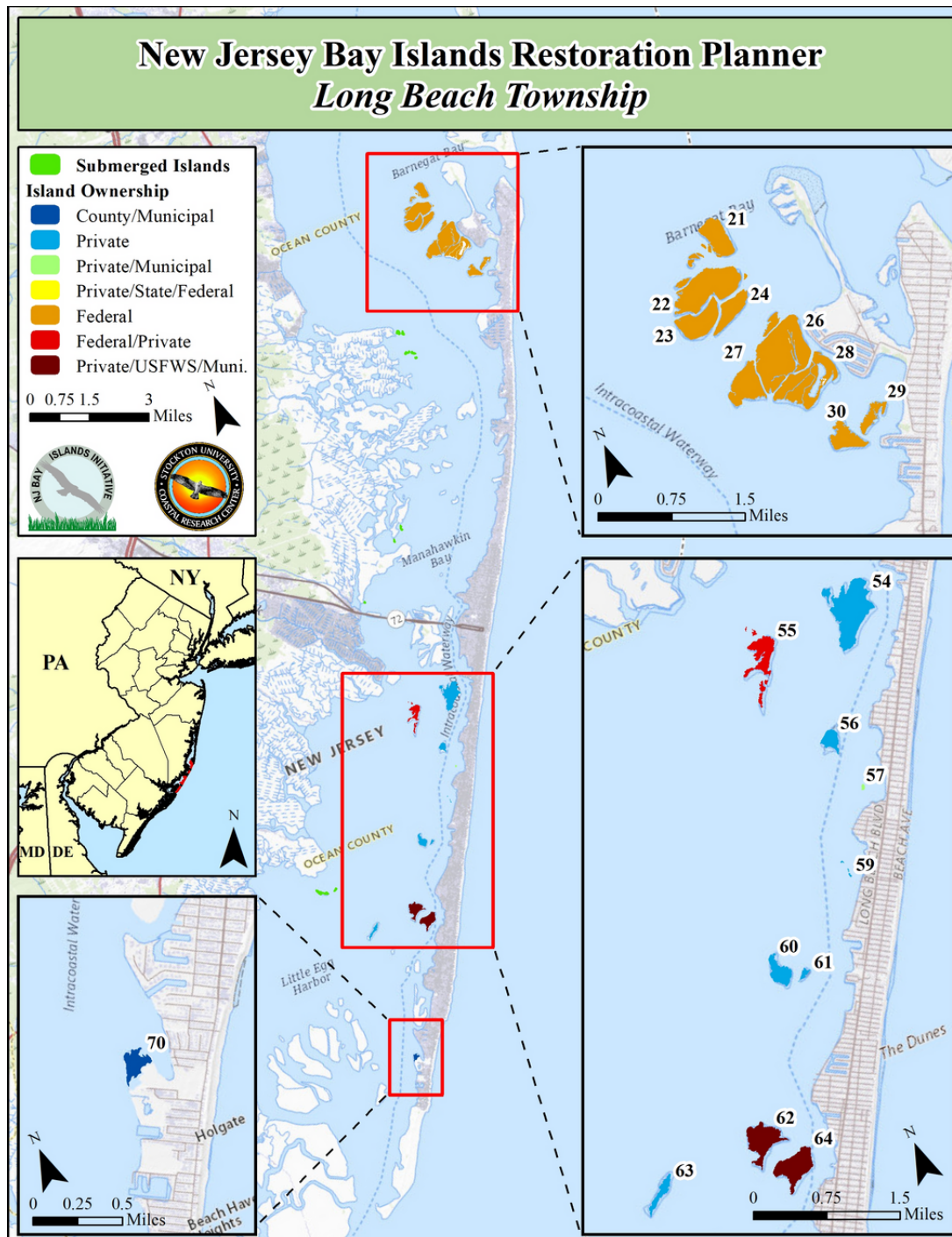
Learn more about bay  
islands near you



# Long Beach Twp Bay Island Facts



- Long Beach Township is a founding member of the NJ Bay Islands Initiative
- Long Beach Township has 20 islands, totaling 611 acres
- 38.6 acres have been lost to erosion since 1977
  - Shelter Island (Island 63) lost 53 feet, or 5.09 acres, of its edge due to erosion
- Most township islands consist of saltmarsh habitat
  - 12 islands have over 50% of high marsh habitat
  - Vol Sedge Island (Island 30) has over 90% high marsh habitat
- 8 islands are utilized as colonial nesting habitat for birds



Visit the NJ Bay Islands Restoration Planner (BIRP) for more information.

<https://maps.coastalresilience.org/nj-bay-islands/>